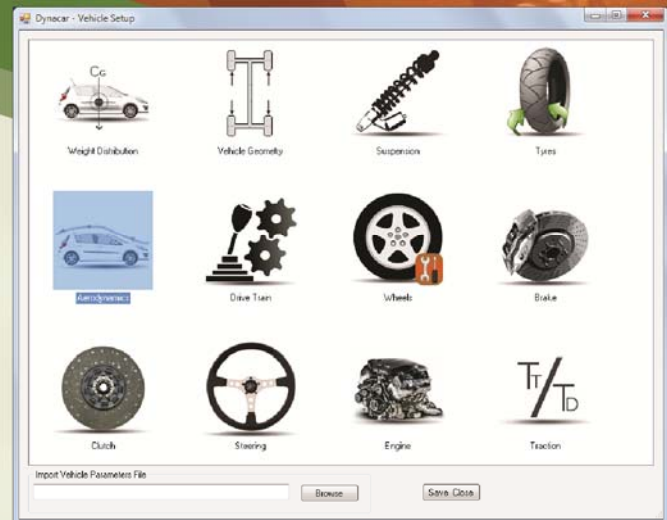


Dynacar

As the world's first fully validated vehicle model simulator, Dynacar allows automotive design and test engineers to test all alternative vehicle sub-systems – from wheels to powertrain simulation – in one complete vehicle environment. This software is changing the way alternative vehicle systems and sub-systems are designed and tested, moving from today's compartmentalized behavior to tomorrow's integrated, efficient and complete vehicle test environment approach.



Dynacar is integrated into design and testing using Wineman Technology's *INERTIA™* test automation software, National Instruments' VeriStand (real-time test and simulation software), and off-the-shelf PXI hardware. Tests developed in the design and hardware-in-the-loop (HIL) phase can be used all the way through the development cycle to the production floor, reducing costs and speeding time to the market.

With Dynacar, engineers save time by starting with a fully validated model that provides extreme flexibility for customization. Through menu-driven options, engineers can quickly and easily change parameter values or plug-in and test another model in a complete vehicle environment.

Dynacar was created by Tecnia, one of the largest applied research institutes in the world, and is distributed in the U.S. by Wineman Technology, a leading automotive design and test systems integrator.

Dynacar²

In order to validate the modeling strategy proposed by Tecnia, Dynacar², a prototype vehicle, has been built and instrumented. This vehicle is now under a significant test campaign, generating data that is being compared with the analytical predictions. Additionally, Dynacar² is being used to validate different developments related to electric vehicles, including active suspension systems, electric drives, and electronic stability and traction control.

Features of Dynacar

- Real-time modeling environment for complete vehicle, system, or sub-system
- Designed for alternative fuel vehicles, HEV's, PEV's, and combustion vehicles
- Intuitive drop down menus for defining model parameters
- Modularity allows for replacing supplied model components with user supplied models
- Supports a wide range of model formats
- Common hardware and software platform for MIL, HIL, and physical test
- Complete reuse of model and test profiles throughout the entire development chain

Dynacar
by tecnia



www.winemantech.com
sales@winemantech.com

